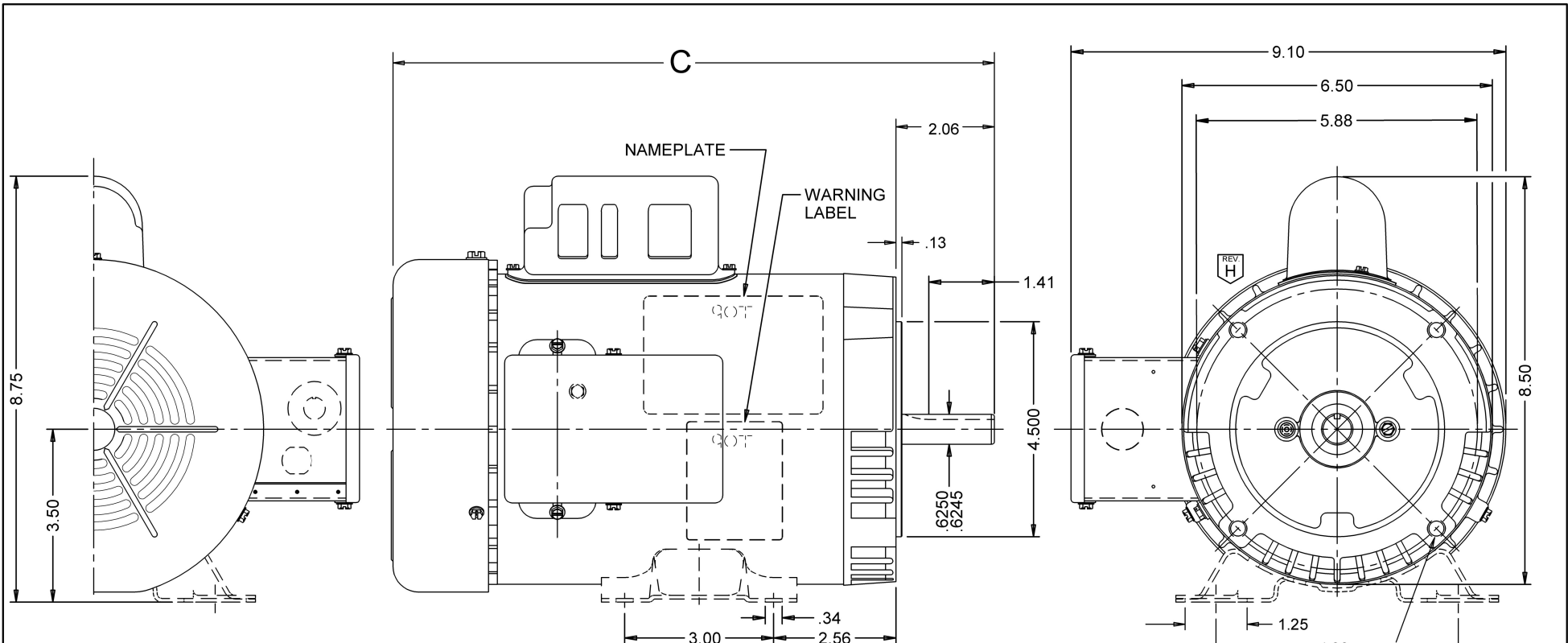




Catalog #: T1C1JC

Model Number:	C063HWF5170015B
PRODUCT NAME:	1 HP - TEFC - 3450
PHASETYPE:	1_CAPACITOR START
MOTOR ENCLOSURE:	TEFC
HORSEPOWER:	1
KILOWATTS:	0.8
POLES:	2
NUMBER SPEEDS:	1
RPM:	3450
HERTZ:	60
VOLTS PRIMARY:	115/208-230 V
VOLTS :	115
VOLTS 2:	208
VOLTS 3:	230
FRME :	56
SHAFT CODE:	C
STATOR DIAMETER:	6.3
STACK:	2
MOUNTING:	C-FACE/BASE
MOTOR TYPE:	FHP
OPPOSITE END BEARING:	6203
SHAFT END BEARING:	6203
AMBIENT:	40
ROTATION:	REVERSIBLE
SERVICE FACTOR:	1.15
STARTCAPMFD:	519
SHIPPING WEIGHT:	26
THERMAL PROTECTION:	NONE
BREAKDOWN TORQUE:	72.34
BREAKDOWN TORQUE UOM:	OZFT
LOCKED ROTOR TORQUE:	76.55
LOCKED ROTOR TORQUE UOM:	OZFT
INSULATION CLASS:	B
KVA CODE LETTER:	J
LOCKED ROTOR AMPS:	66
NEMA NOMINAL EFFICIENCY:	66.7
FULL LOAD AMPS PRIMARY:	13.6/6.9-6.8
SERVICE FACTOR AMPS PRIMARY:	14.2/6.9-7.1



VAR	MODEL	CATALOG NO.	C	HP	VOLTS	HZ	RPM	BASE REQUIREMENT	PROTECTOR	OBS
001	C63CXHWD-5188	T32CA1JHCR	12.89	1 1/2	115/208-230	60	3450	NO	AUTO	5/2/2005
002	C63VZHWE-5188	T2CA1JHCR	13.89	2	115/208-230	60	3450	NO	AUTO	5/2/2005
003	C63CXHYE-5189	T34CA1JCR	11.89	3/4	115/208-230	60	3450	NO	AUTO	
004	C63CXHWC-5167	T1CA1JCR	12.39	1	115/208-230	60	3450	NO	AUTO	
005	C63HWF-5170	T1C1JC	12.39	1	115/208-230	60	3450	YES	NONE	
006	C63HZF-5210	T34C1JC	11.89	3/4	115/208-230	60	3450	YES	NONE	
007	C63JCR-5279	T12C2JC	11.38	1/2	115/208-230	60	1725	YES	NONE	
008	C63CXJDB-5286	T34CA2JCR	11.89	3/4	115/208-230	60	1725	NO	AUTO	
009	C63JDJ-5293	T34C2JC	11.89	3/4	115/208-230	60	1725	YES	NONE	

4 THREADED HOLES
.375-16

ROTATION: REVERSIBLE

SHEET NUMBER	REV	REVISION RECORD FOR: D1594-02
1 OF 2	H	ADDED VIEW OF DRAIN PLUG IN END SHIELD SHAFT END.
05-AUG-14		
ISSUED BY	REVIEWED BY	ENGINEER APPROVED
I. GUTIERREZ	S. SCHINZING	T. BOSSALLER

INFORMATION DISCLOSED ON THIS DOCUMENT IS CONSIDERED PROPRIETARY AND SHALL NOT BE REPRODUCED OR DISCLOSED WITHOUT WRITTEN CONSENT OF NIDEC MOTOR CORPORATION

NIDEC MOTOR CORPORATION

ALL DIMENSIONS ARE FOR REFERENCE ONLY UNLESS TOLERANCE IS GIVEN

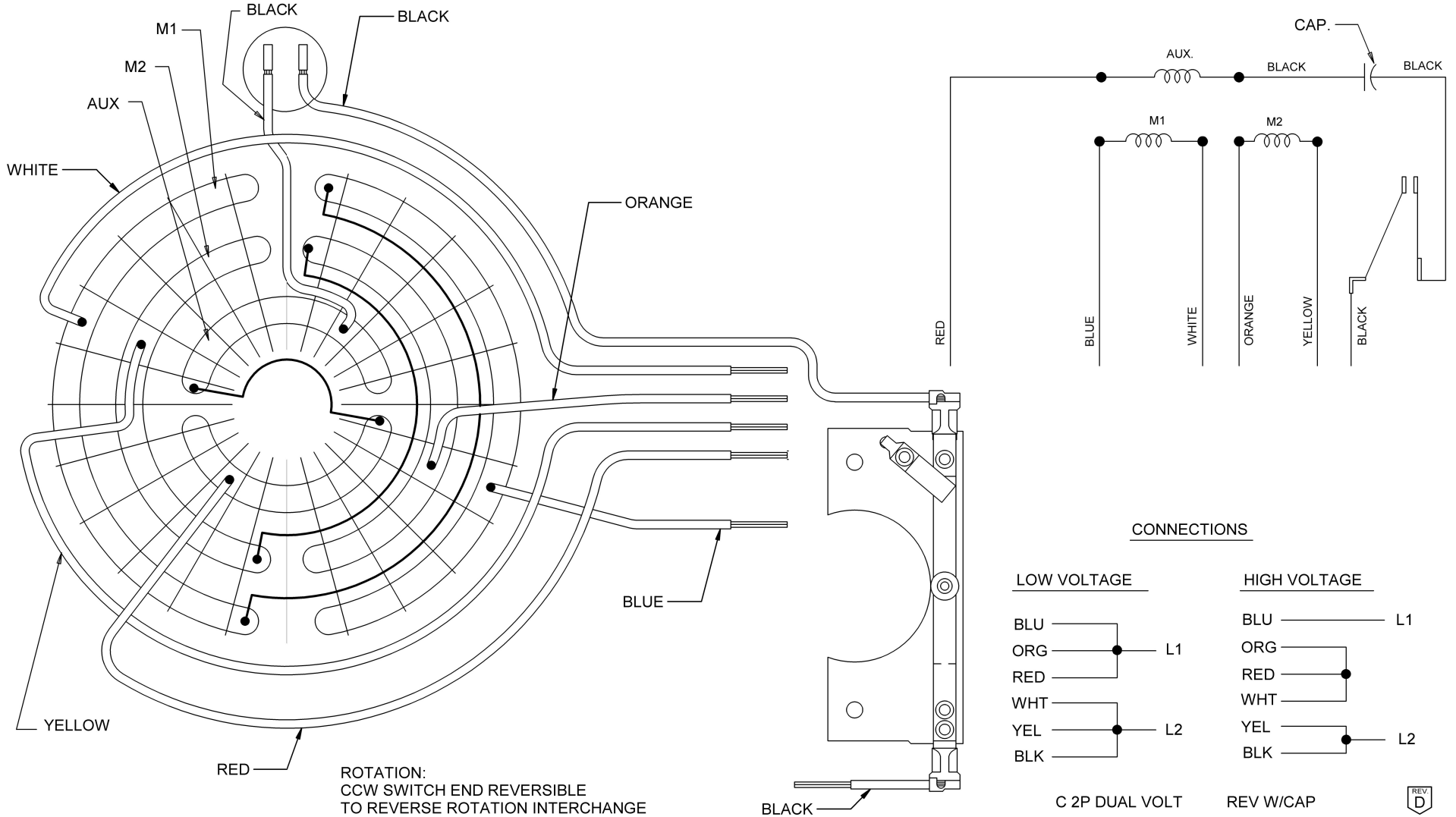
TITLE	CODE	ITEM NO.	SIZE
ASSEMBLED VIEW	V01	759376	B

NIDEC MOTOR CORPORATION 05-Aug-14

VAR	MODEL	CATALOG NO.	C	HP	VOLTS	HZ	RPM	BASE REQUIREMENT	PROTECTOR	OBS
010	C63CXJCH-5272	T12CA2JCR	11.38	1/2	115/208-230	60	1725	NO	AUTO	
011	C63JCS-5280	T12C2JCR	11.39	1/2	115/208-230	60	1725	NO	NONE	
012	C63JDK-5294	T34C2JCR	11.89	3/4	115/208-230	60	1725	NO	NONE	
013	C63CXJDS-5300	T1CA2JCR	12.38	1	115/208-230	60	1725	NO	AUTO	
014	C63JEG-5307	T1C2JHC	12.38	1	115/208-230	60	1725	YES	NONE	1/9/2006
015	C63JED-5308	T1C2JCR	12.38	1	115/208-230	60	1725	NO	NONE	
016	C63JIN-5404		11.39	1/2	115/208-230	60	1725	NO	NONE	
017	C63JJP-5405		11.89	3/4	115/208-230	60	1725	NO	NONE	

SHEET NUMBER 2 OF 2	REV H	REVISION RECORD FOR: D1594-02			INFORMATION DISCLOSED ON THIS DOCUMENT IS CONSIDERED PROPRIETARY AND SHALL NOT BE REPRODUCED OR DISCLOSED WITHOUT WRITTEN CONSENT OF NIDEC MOTOR CORPORATION	NIDEC MOTOR CORPORATION				
	REVISION DATE 05-AUG-14									
ISSUED BY I. GUTIERREZ		REVIEWED BY S. SCHINZING	ENGINEER APPROVED T. BOSSALLER	ALL DIMENSIONS ARE FOR REFERENCE ONLY UNLESS TOLERANCE IS GIVEN			TITLE ASSEMBLED VIEW	CODE V01	ITEM NO. 759376	SIZE B

NIDEC MOTOR CORPORATION 05-Aug-14

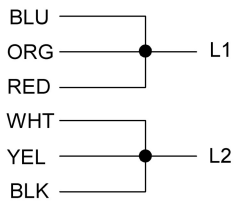


ROTATION:
CCW SWITCH END REVERSIBLE
TO REVERSE ROTATION INTERCHANGE
BLACK AND RED LEADS

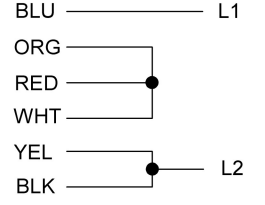
NOTE:
SECURE ALL LEADS
TO PREVENT INTERFERENCE
WITH MOVING PARTS.

CONNECTIONS

LOW VOLTAGE



HIGH VOLTAGE



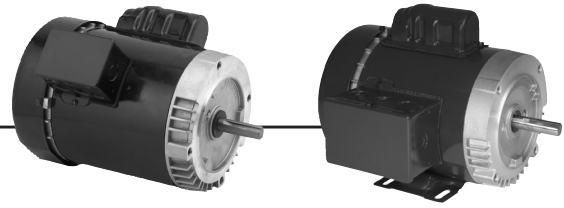
C 2P DUAL VOLT REV W/CAP



NIDEC CONFIDENTIAL
NIDEC MOTOR CORPORATION 03-Oct-13

REVISION DESCRIPTION FOR: C8396-09	SCALE: NONE	UNITS: IN	TITLE: DIAGRAM OF CONNECTIONS	NIDEC MOTOR CORPORATION
CHANGED BACKGROUND	TOLERANCES ON DIMENSIONS (UNLESS OTHERWISE SPECIFIED)		ISSUED BY: E. VICENCIO	
MATERIAL:	INCHES: .XX = ±.01	mm: .XXX = ±.005	APPROVED BY: J. SALAZAR	REVISION DATE: 03-OCT-13
	ANGLES: X° = ±1°		CODE: D04	DWG NO: 760680
			REV: D	SHEET NUMBER: 1 OF 1
				DWG SIZE: B

General Purpose Single Phase, Capacitor Start Totally Enclosed Fan Cooled (TEFC) C-Face



APPLICATIONS:

For use on air compressors, pumps, conveyors, blowers and general industrial equipment.

FEATURES:

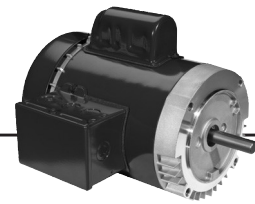
- Double Shielded Ball Bearings
- Class B Insulation
- Continuous Duty
- 40°C Ambient
- Capacitor Start, Induction Run
- F1 Assembly
- Reversible Rotation
- 50/60 Hz Motors Have 1.0 S.F. on 50 Hz

Footed

HP	RPM	Voltage	Frame	Catalog Number	List	Discount Symbol	SF	"C" Dim. (inches)	Ship Wt. (lbs)	Full Load Amps	Notes
1/4	1800	115/208-230	56C	T14C2JC	\$390	DS-3F	1.15	11.1	22	6.5/2.8-3.2	25
1/3	1800	115/208-230	56C	T13C2JC	\$380	DS-3F	1.15	11.0	19	6.6/3-3.3	25
1/2	1800	100-120 & 200-240	56C	6212	\$565	DS-3FMP	1.25	12.0	25	6.3-5.6/3.1-2.8	18,24,98
	1800	115/208-230	56C	T12C2JC	\$482	DS-3FMP	1.15	11.4	32	9.0/4.3-4.5	25
3/4	3600	115/208-230	56C	T34C1JC	\$417	DS-3FMP	1.15	11.9	32	10.4/5.3-5.2	25
	1800	100-120 & 200-240	56C	6214	\$691	DS-3FMP	1.25	12.0	32	9.2-8.4/4.6-4.2	24
	1800	115/208-230	56C	T34C2JC	\$585	DS-3FMP	1.15	11.9	32	11.4/5.7-5.7	25
1	3600	115/208-230	56C	T1C1JC	\$489	DS-3FMP	1.15	12.4	26	13.6/6.9-6.8	25
	1800	100-120 & 200-240	56C	T1CA2ZC	\$730	DS-3FMP	1.15	13.4	30	11.0-9.2/5.5-4.7	
	1800	100-120 & 200-240	56C	T1CM2ZC	\$760	DS-3FMP	1.15	13.4	38	11.0-9.2/5.5-4.7	
	1800	115/208-230	143TC	T1C2J14C	\$621	DS-3F	1.15	12.4	32	14.0/6.9-7.0	25
	1800	115/208-230	56HC	T1C2JHC	\$621	DS-3FMP	1.15	12.4	32	14.0/6.9-7.0	25
1 1/2	3600	115/208-230	56HC	T32C1JHC	\$603	DS-3FMP	1.15	12.9	42	14.6/8.1-7.4	25
	1800	115/208-230	145TC	T32C2J14C	\$731	DS-3F	1.15	13.9	45	14.4/8.0-7.2	25
	1800	115/208-230	56HC	T32C2JHC	\$736	DS-3FMP	1.15	13.9	41	14.4/8.0-7.2	25
2	3600	115/208-230	145TC	T2C1J14C	\$778	DS-3FMP	1.15	13.4	43	19.5/10.8-9.7	25
	1800	115/208-230	145TC	T2C2J14C	\$846	DS-3FMP	1.15	13.9	46	18.9/10.3-9.4	18,25
	1800	115/208-230	56HC	T2C2JHC	\$846	DS-3FMP	1.15	13.9	43	18.9/10.3-9.4	18,25
5	3600	230	184TC	T5C1K18C	\$1,397	DS-3SP	1.00	17.3	91	19.6	18,25

Note 18 Incorporates Run Capacitor
 Note 24 Automatic Reset Thermal Protector Overload
 Note 25 Non-protected
 Note 98 50/60 Hertz

General Purpose Single Phase, Capacitor Start Totally Enclosed Fan Cooled (TEFC) C-Face



(continued)

Footless

HP	RPM	Voltage	Frame	Catalog Number	List	Discount Symbol	SF	"C" Dim. (inches)	Ship Wt. (lbs)	Full Load Amps	Notes
1/4	1800	115/208-230	56C	T14C2JCR	\$330	DS-3F	1.15	11.0	22	6.5/2.8-3.2	25
1/3	1800	115/208-230	56C	T13C2JCR	\$380	DS-3F	1.15	11.0	22	6.6/3.0-3.3	25
	1800	115/208-230	56C	T13CA2JCR	\$380	DS-3FMP	1.15	11.0	22	6.6/3.0-3.3	24
	1800	115/230	42CZ	T13C2P42ZCR	\$394	DS-3FMP	1.00	11.6	21	6.2/3.1	25
1/2	3600	115/208-230	56C	T12CA1JCR	\$358	DS-3FMP	1.15	12.0	18	8.0/3.8-4.0	24
	1800	100-120 & 200-240	56C	T12C2ZCR	\$592	DS-3FMP	1.25	12.0	25	6.3-5.6/3.1-2.8	18,25,98
	1800	115/208-230	56C	T12C2JCR	\$439	DS-3FMP	1.15	12.4	32	9.0/4.3-4.5	25
	1800	115/208-230	56C	T12CA2JCR	\$496	DS-3FMP	1.15	11.4	32	9.0/4.3-4.5	24
	1800	115/208-230	56C	T12CM2JCR	\$462	DS-3FMP	1.15	11.4	32	9.0/4.3-4.5	23
	1200	115/208-230	56C	T12C3JCR	\$828	DS-3FMP	1.15	12.4	32	10.4/5.1-5.2	25
3/4	3600	115/208-230	56C	T34CA1JCR	\$451	DS-3FMP	1.15	11.9	32	10.4/5.3-5.2	24
	1800	100-120 & 200-240	56C	T34C2ZCR	\$699	DS-3FMP	1.25	12.4	23	9.2-8.4/4.6-4.2	18,25,98
	1800	115/208-230	56C	T34C2JCR	\$527	DS-3FMP	1.15	11.9	32	11.4/5.7-5.7	25
	1800	115/208-230	56C	T34CA2JCR	\$582	DS-3FMP	1.15	11.9	32	11.4/5.7-5.7	24
	1800	115/208-230	56C	T34CM2JCR	\$551	DS-3FMP	1.15	11.9	32	11.4/5.7-5.7	23
	1200	115/208-230	56C	T34C3JCR	\$932	DS-3FMP	1.15	13.4	28	10.6/5.4-5.3	18,25
1	3600	115/208-230	56C	T1CA1JCR	\$524	DS-3FMP	1.15	12.4	32	13.6/6.9-6.8	24
	1800	115/208-230	143TC	T1C2J14CR	\$638	DS-3SP	1.15	12.4	32	14.0/6.9-7.0	25
	1800	115/208-230	143TC	T1CA2J14CR	\$677	DS-3SP	1.15	12.4	32	14.0/6.9-7.0	24
	1800	115/208-230	143TC	T1CM2J14CR	\$700	DS-3SP	1.15	12.4	32	14.0/6.9-7.0	23
	1800	115/208-230	56C	T1C2JCR	\$571	DS-3FMP	1.15	12.4	32	14.0/6.9-7.0	25
	1800	115/208-230	56C	T1CA2JCR	\$610	DS-3FMP	1.15	12.4	32	14.0/6.9-7.0	24
	1800	115/208-230	56C	T1CM2JCR	\$633	DS-3FMP	1.15	12.4	32	14.0/6.9-7.0	23
	1200	115/208-230	56C	T1C3JCR	\$1,011	DS-3FMP	1.15	13.9	44	12.6/6.6-6.3	25
1 1/2	3600	115/208-230	143TC	T32C1J14CR	\$637	DS-3SP	1.15	12.9	32	14.6/8.1-7.4	25
	3600	115/208-230	56C	T32CA1JCR	\$637	DS-3FMP	1.15	12.9	32	14.6/8.1-7.4	24
	1800	115/208-230	145TC	T32C2J14CR	\$723	DS-3SP	1.15	13.9	47	14.4/8.0-7.2	25
	1800	115/208-230	56C	T32C2JCR	\$650	DS-3FMP	1.15	13.9	31	14.4/8.0-7.2	25
	1800	115/208-230	56C	T32CA2JCR	\$689	DS-3FMP	1.15	13.9	31	14.4/8.0-7.2	24
	1800	115/208-230	56C	T32CM2JCR	\$712	DS-3FMP	1.15	13.9	31	14.4/8.0-7.2	23
2	3600	115/208-230	145C	T2C1J14CR	\$813	DS-3SP	1.15	12.9	34	19.5/10.8-9.7	25
	1800	115/208-230	145TC	T2C2J14CR	\$969	DS-3SP	1.15	13.9	46	18.9/10.3-9.4	25
	1800	115/208-230	145TC	T2CA2J14CR	\$1,008	DS-3SP	1.00	14.4	40	18.9/10.3-9.4	24
	1800	115/208-230	56C	T2C2JCR	\$739	DS-3FMP	1.15	13.9	31	18.9/10.3-9.4	25
	1800	115/208-230	56C	T2CA2JCR	\$778	DS-3FMP	1.00	14.4	31	18.9/10.3-9.4	24
	1800	115/208-230	56C	T2CM2JCR	\$801	DS-3FMP	1.00	13.9	31	18.9/10.3-9.4	23

- Note 18 Incorporates Run Capacitor
 Note 23 Manual Reset Thermal Protector Overload
 Note 24 Automatic Reset Thermal Protector Overload
 Note 25 Non-protected
 Note 98 50/60 Hertz